

# Introduction: Who we are



Formed in late 2014, Front and Centered is a statewide, community-driven coalition of over 60 groups working to achieve environmental justice by asserting policy solutions that center equity.

Our members are the leadership of communities first and worst hit by environmental and climate impacts – communities of color and indigenous communities. Representing APIs, African Americans, Latinos, immigrants and refugees and and indigenous peoples.

Together, we are working to **build the power and capacity of a statewide movement** for racial, economic, and environmental justice.

21 Progress  
Africanos  
Alliance for a Just Society  
Asia Pacific Cultural Center  
Asian Counseling and Referral Service  
Asian Pacific Islander Coalition Yakima Valley Chapter  
Asian Pacific Islander Americans for Civic Engagement  
Asian Pacific Islander Coalition of Pierce County  
Asian Pacific Islander Coalition Snohomish County Chapter  
Asian Pacific Islander Coalition South Puget Sound Chapter  
Asian Pacific Islander Coalition Spokane Chapter  
Asian Pacific Islander Coalition King County Chapter  
Asian Pacific Islander Coalition statewide organization  
Casa Latina  
Español USA/HSPI  
Casa Latina  
Central District Arts Forum  
Centro Integral Educativo Latino de Olympia  
Centro Latino Children's Alliance  
Coalition of Immigrants, Refugees, and Communities of Color  
Colectiva Legal del Puerto

Community Alliance for Global Justice  
Community to Community  
Duwamish River Cleanup Coalition/TAC  
El Comité de Derechos Humanos de Forks  
Enseñe Hermanos  
Environmental Professionals of Color – Seattle  
FEET Seattle  
Filipino American Political Action Group of Washington  
GOC Greens  
Hilltop Urban Centers  
Inman/CDA  
Japanese American Citizens League Seattle  
Khalasa Gurmat Center  
Latino Community Fund  
LELO  
Living Kindness Meditation Center – Tu Tam Temple  
Mother Africa  
Multicultural Self-Sufficiency Movement  
North Itasca Fund  
NAACP – Seattle King County Chapter

NAACP – Tacoma Chapter  
National Asian Pacific American Women's Forum – Seattle Chapter  
Native Youth Leadership Alliance  
Nongratic Assistance Center  
Ondemera  
Organization of Chinese Americans  
Progress Latino Progress  
Puget Sound Sage  
Rajava Society  
Refugee & Immigrant Services NW  
Seattle Charaboun International District Preservation and Development Authority  
Southwest VIA LUAC Council 4703  
Statewide Poverty Action Network  
Tigra Community  
United Indians of All Tribes Foundation  
Urban League Tacoma  
Washington CAN  
Washington State Budget & Policy Center  
Women of Color Speak Out  
Wing Luke Museum of the Asian Pacific American Experience

## Main ingredient of Net Zero City: Strong Democratic Institutions



Recent makeup of Yakima City Council after district elections (no longer current)



City of Seattle Democracy vouchers



## A socially advanced Net Zero City...

- Equitable transit oriented development (including subsidized housing)
- Robust and equitable investments in public schools
- Thriving local businesses
- Welcoming and inclusive



## Our Vision of a Net Zero City continued...



*Local food systems*



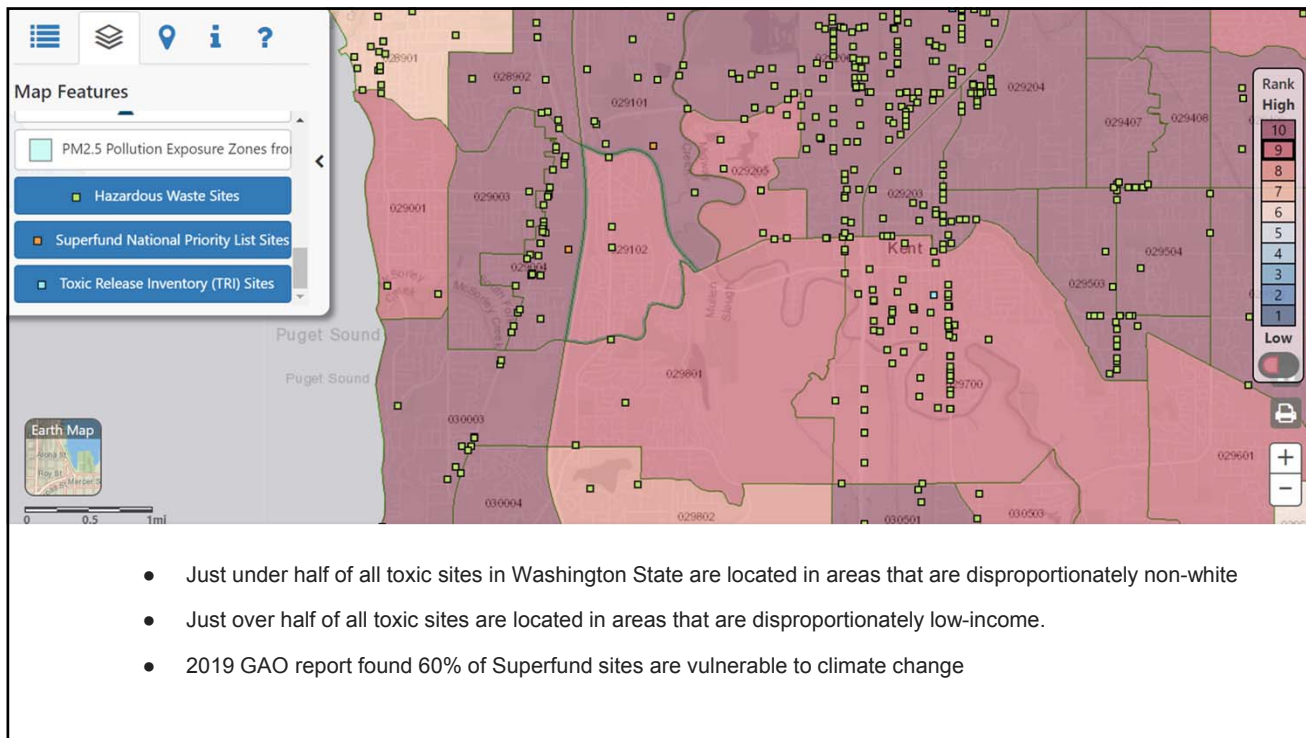
Environmental laws guided by a cumulative impacts analysis



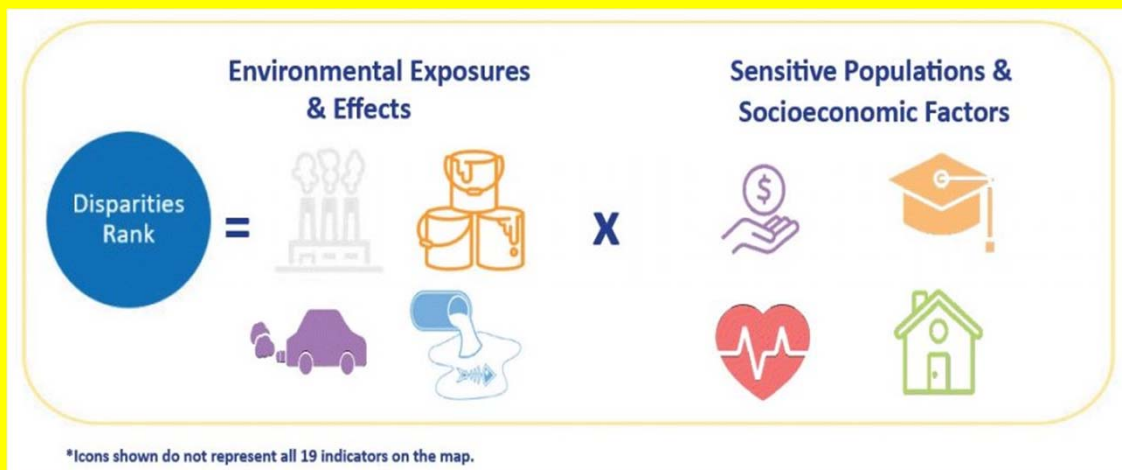
*Strong labor standards: Priority hire, prevailing wage, apprenticeship utilization*



Trees planting programs for resilience



An opportunity: Washington’s 100% clean electricity law centers equity as a core consideration in utility planning and processes, using the map to ID vulnerable communities as defined by:



*What could be in low-income energy assistance in the 100% clean law?*



An equitable electricity system includes the benefits of low-income weatherization, cash assistance, and community energy (microgrids)

